



EQAS evaluation

Salmonella and Campylobacter

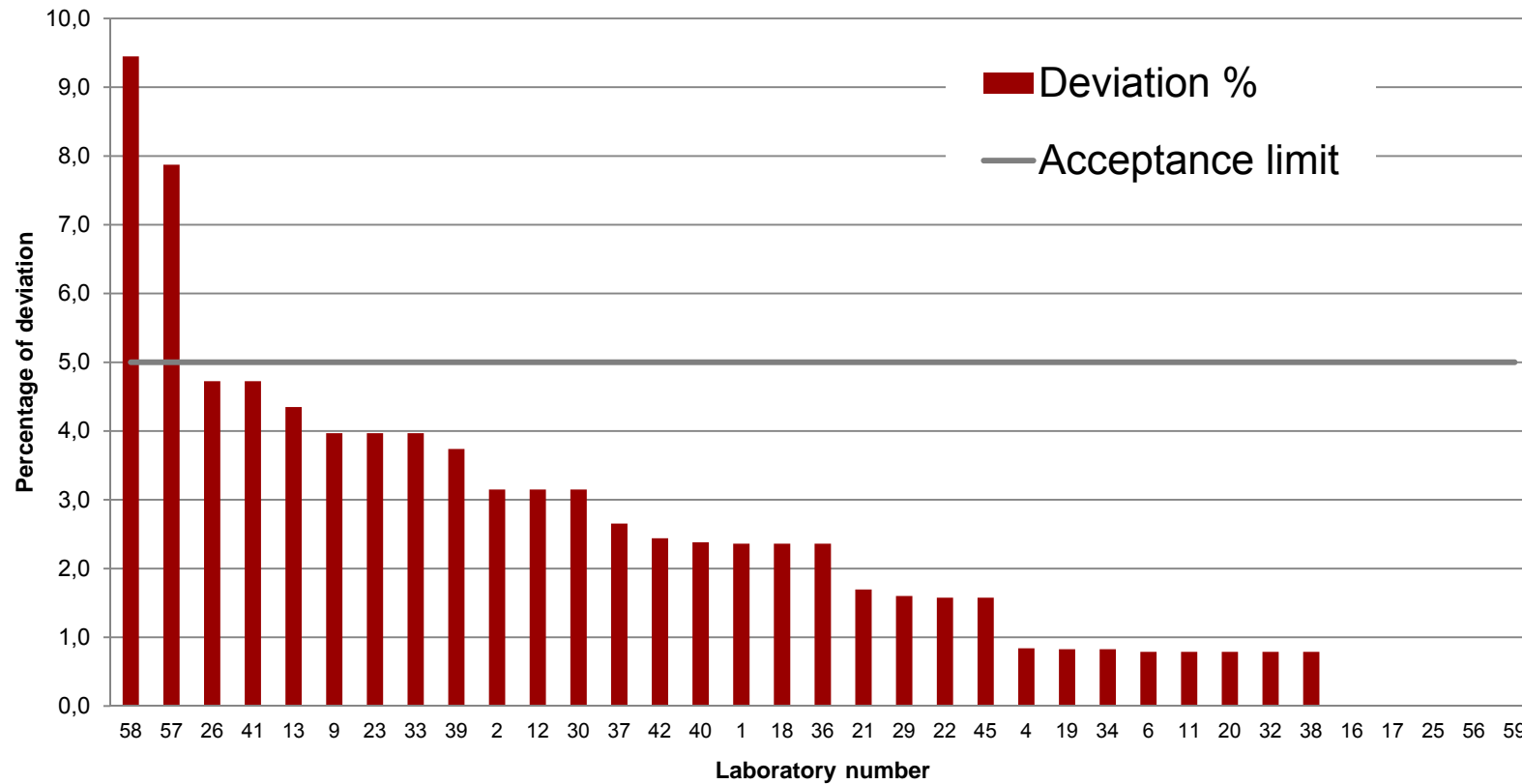
Interpretation $><$ MIC-values
Internal control; three years' results

Susanne Karlsmose Pedersen (suska@food.dtu.dk)
EURL-AR workshop, April 23-24th, 2015

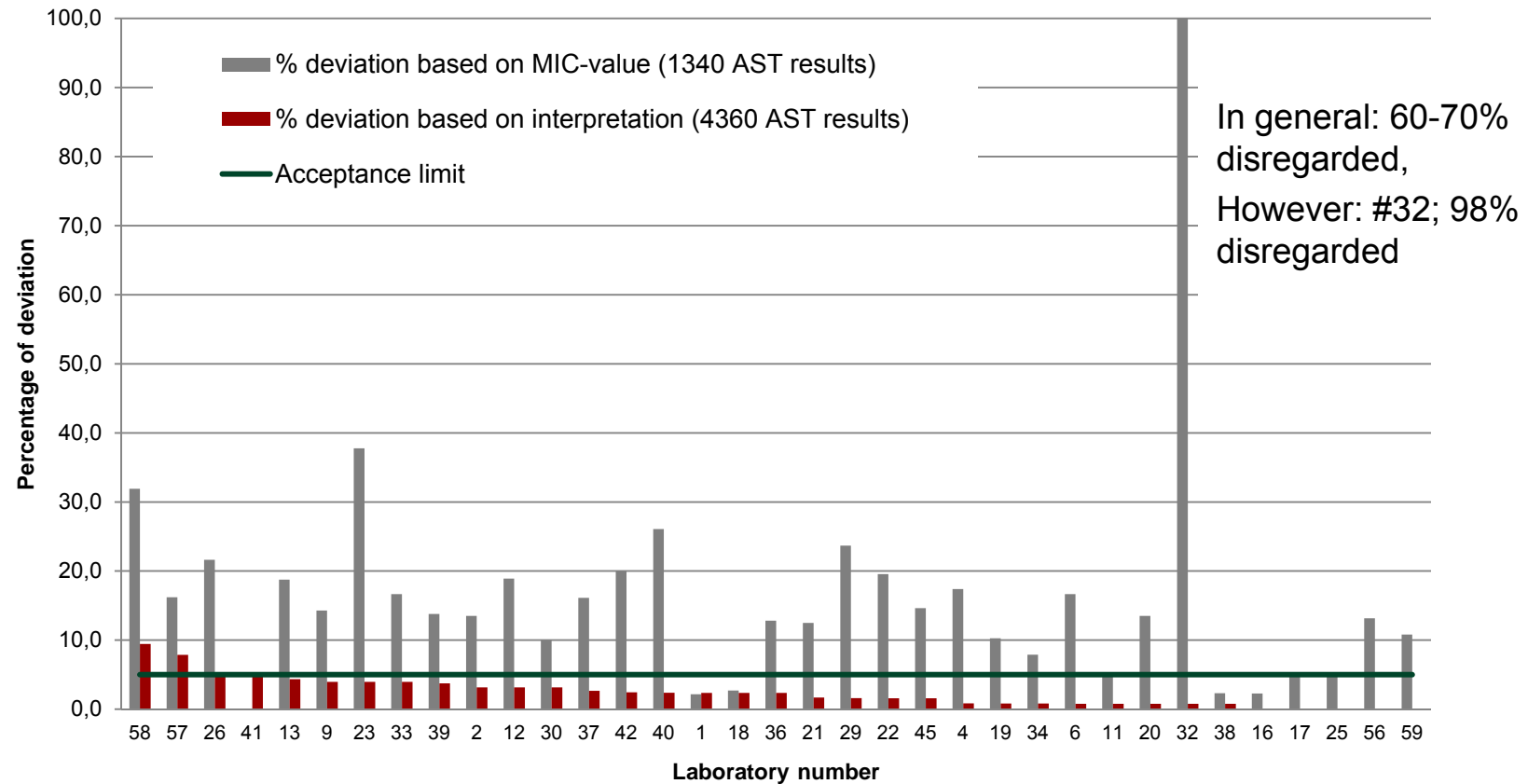
Evaluation by MIC

- Included values as correct
 - when obtained value within ± 1 MIC from expected MIC
- Other values evaluated as incorrect or inconclusive
- E.g.
 - Correct when obtained value: $1\mu\text{g/mL}$, exp $2\mu\text{g/mL}$
 - Incorrect when obtained value $>4\mu\text{g/mL}$, exp $2\mu\text{g/mL}$
 - Inconclusive (disregarded) when obtained value $\leq 4\mu\text{g/mL}$, exp $4\mu\text{g/mL}$ or exp $\leq 4\mu\text{g/mL}$

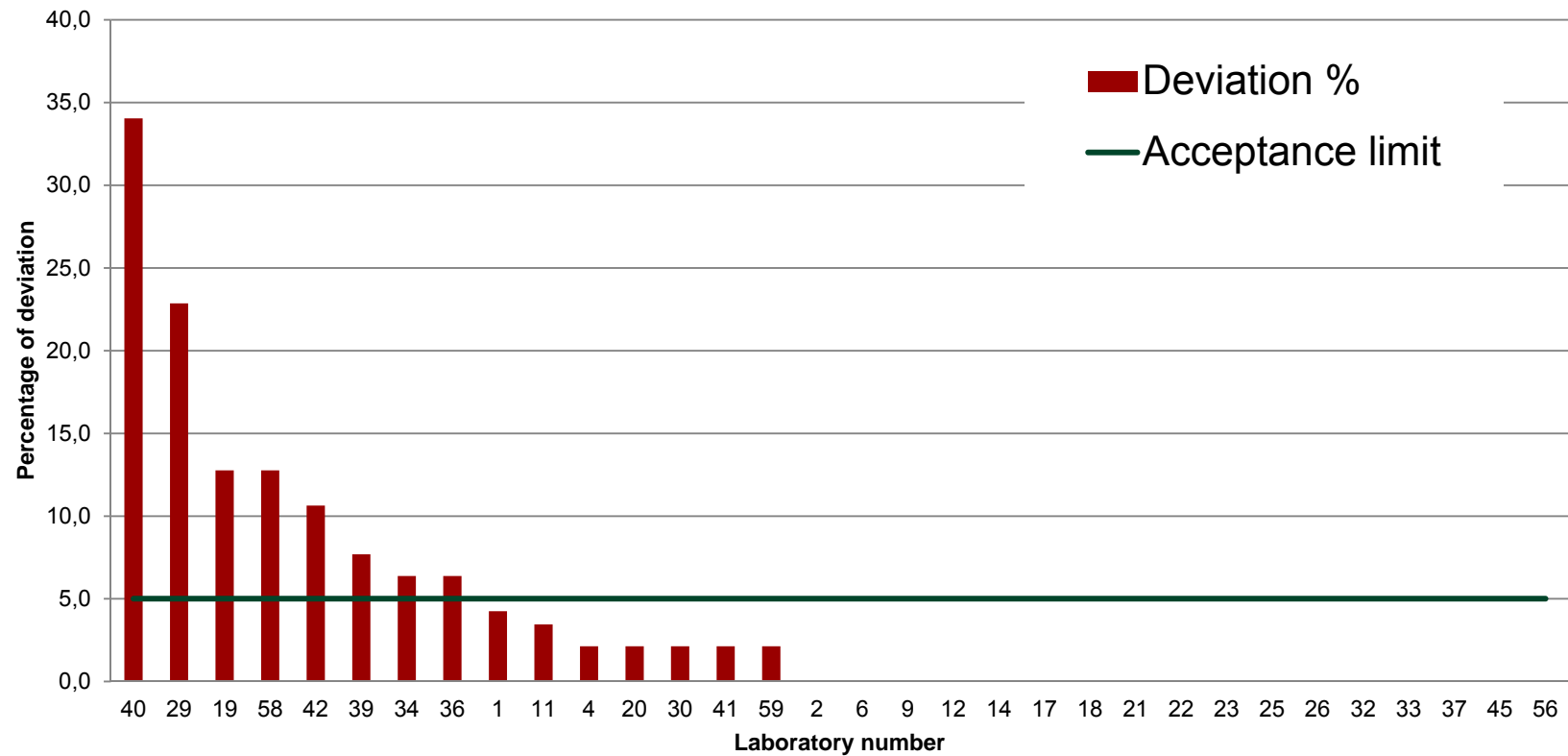
Evaluation by MIC – *Salmonella*



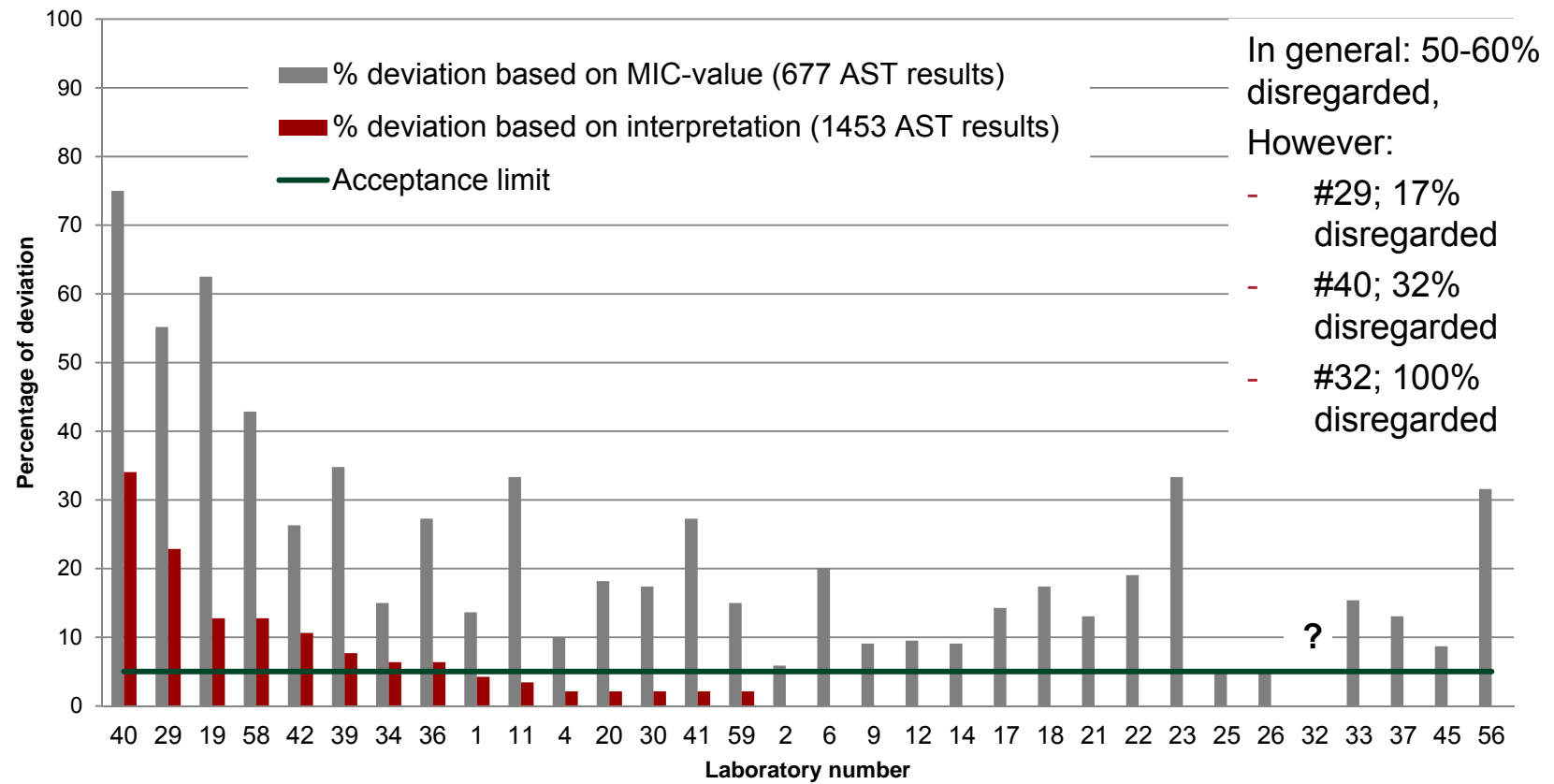
Evaluation by MIC – *Salmonella*



Evaluation by MIC - *Campylobacter*



Evaluation by MIC - *Campylobacter*

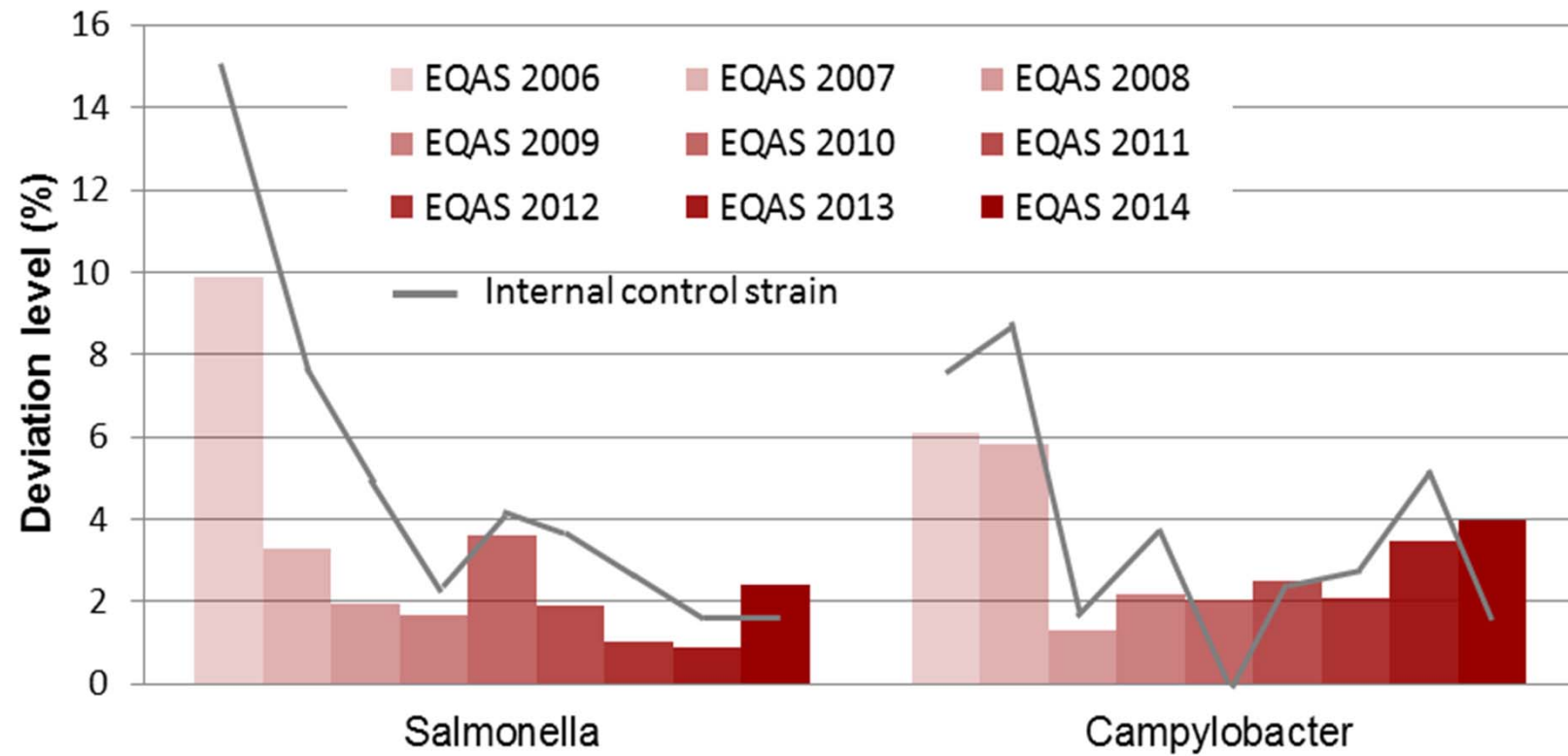


Summary

Evaluation of MIC's appears not to give a good indication of a laboratory's proficiency for performing AST...

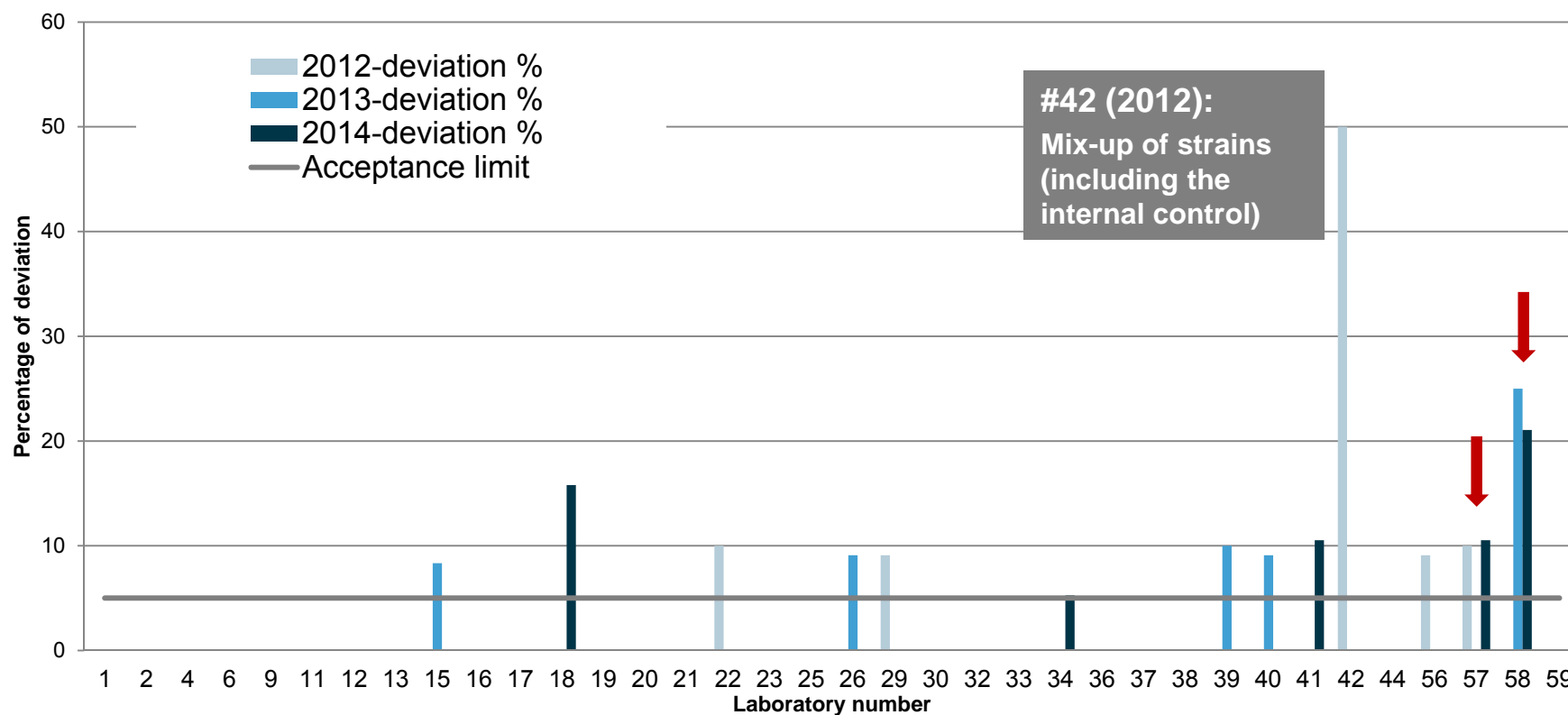
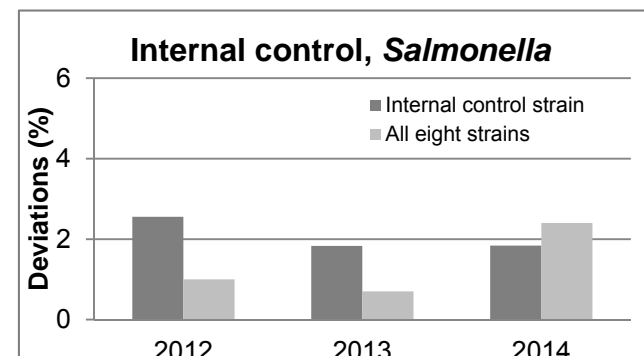
... comments?

Internal control



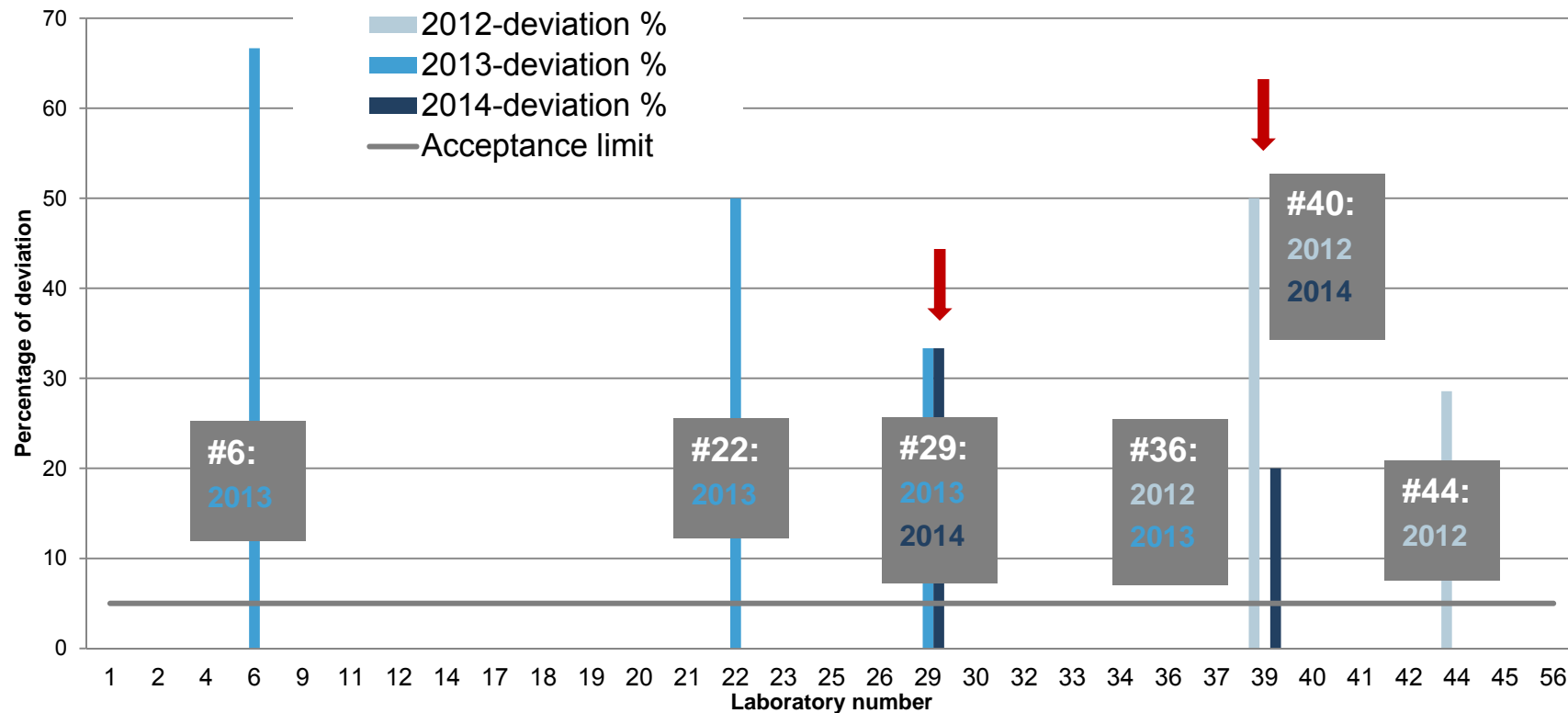
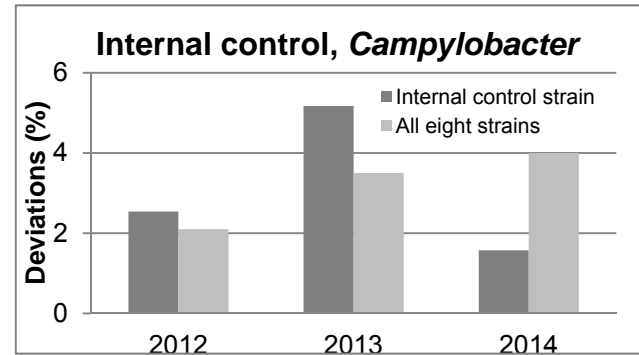
Three years' deviation levels – *Salmonella*

2012, 2013, 2014:
None of the labs were regarded as outliers



Three years' deviation levels – *Campylobacter*

Laboratories regarded as outliers



Summary

Evaluation of results from the internal control strain appears not to be a good 'easy' method to indicate improvement for laboratories performance

... comments?